



EZISURG MEDICAL

Ezisurg Endo - Surgery Bariatric Serie



easyEndo™

Universal Linear Cutting Stapler
and Loading Units for Single Use

easyEndo™

Linear Cutting Stapler and
loading units for single use has received
C.E Mark and **F.D.A Certification.**

Universal Linear Cutting Stapler

DOUBLE ARTICULATING JOINT DESIGN

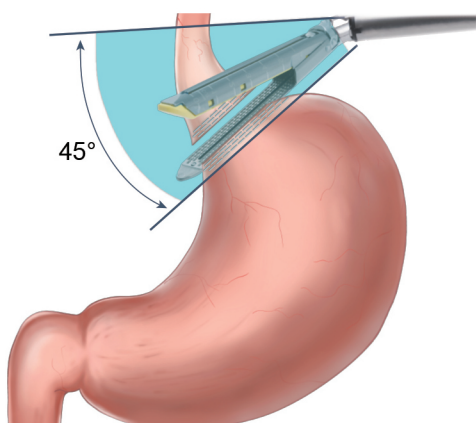
A 120° degree of articulation gives you the freedom to manipulate your stapler and position it where you prefer.

120° Articulation

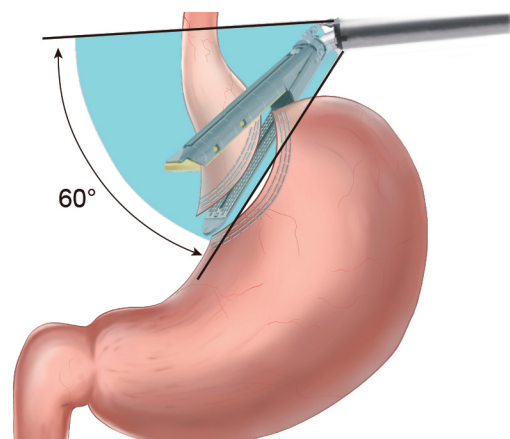
Improving the utilization rate of the cartridge while reducing the risk of leakage.



This allows the cartridge to cut and suture the tissue in a fully vertical manner, which improves the utilization rate of the cartridge while reducing the risk of leakage.



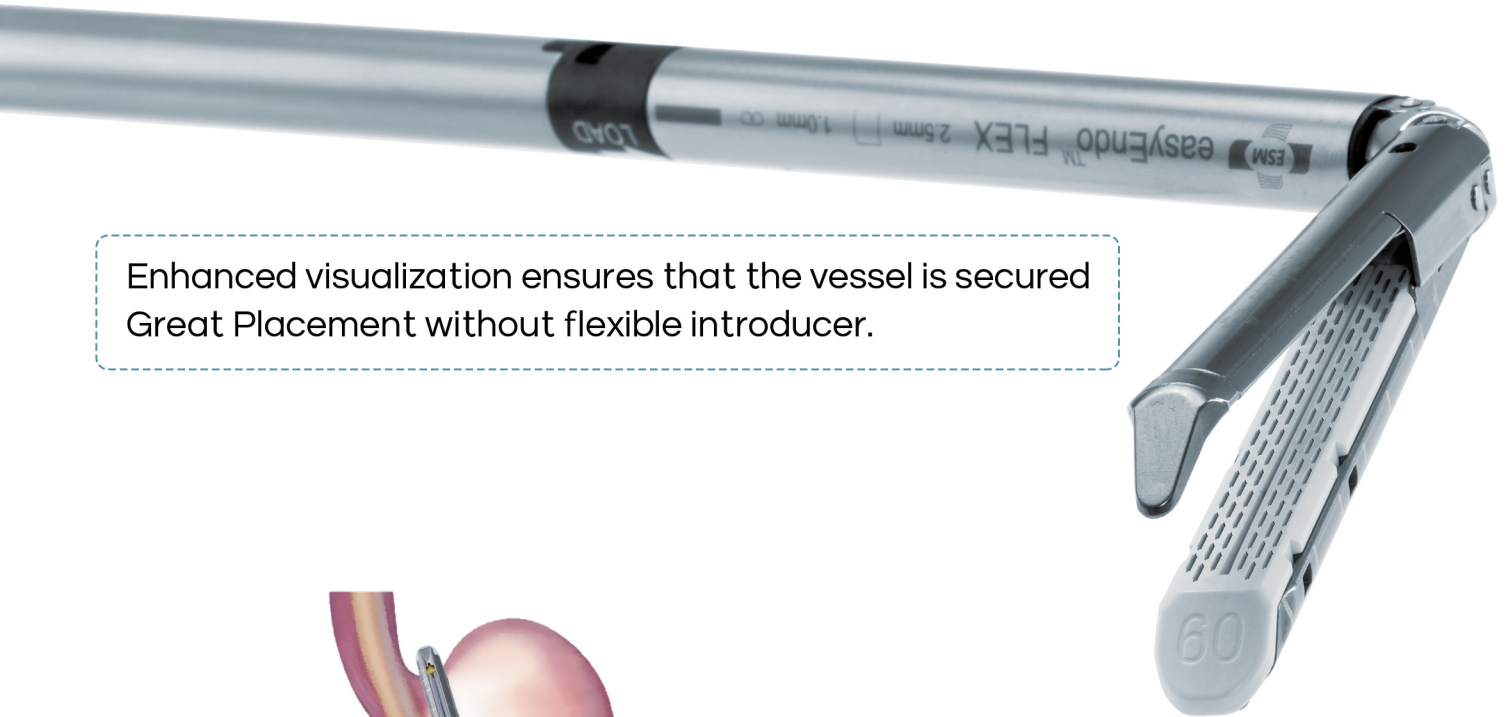
Without Articulation



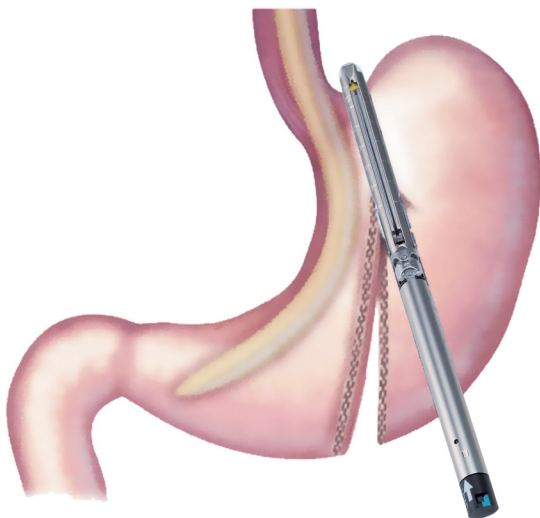
Easy Flex TM

EasyEndo Curve tip

Our curved tip provides an enhanced stapling option for procedures where confined surgical spaces require more control and maneuverability.

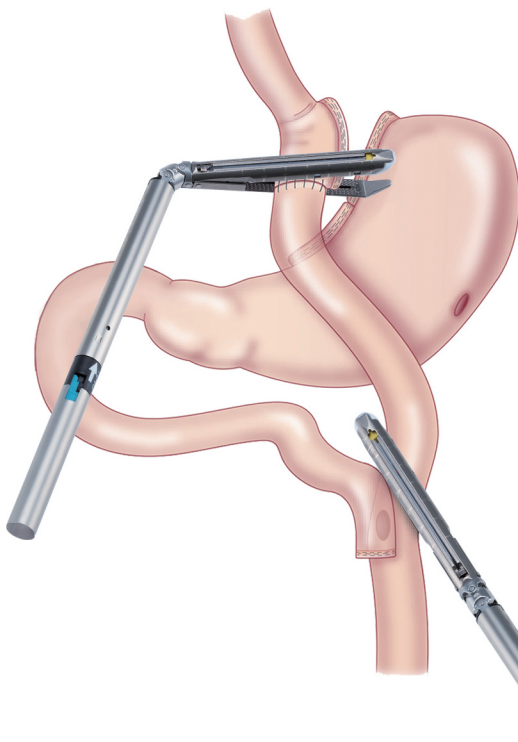


Enhanced visualization ensures that the vessel is secured Great Placement without flexible introducer.



Curved tip makes it easier to perform bypass on vessels and fine structures.

Improve surgeon performance and outcomes for sleeve gastrectomy patients.



Curved tip & 120 Articulation

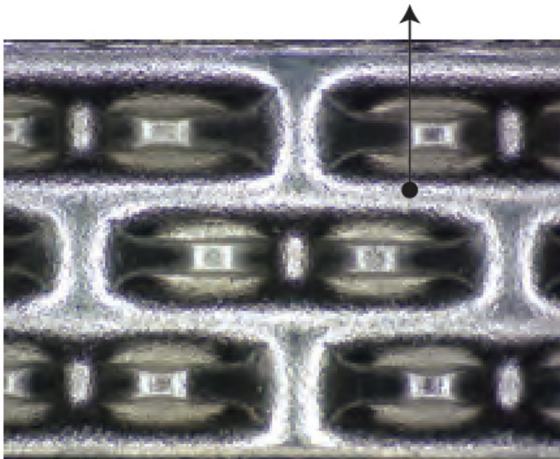
120 articulation makes it Easier to perform vertical stomach cuts in ROUX-EN-Y GASTRIC BYPASS procedures and our curved tip designs aids **in tissue manipulation.**

Intelligent triangular-anvil shaped bump

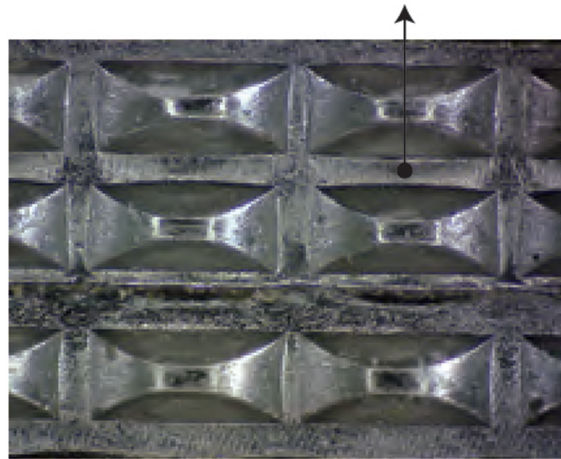
EZISURG ENDO - SURGERY BARIATRIC SERIE

Fully effective staple guiding and compound anvil technology to ensure that staples have a better B-shaped formation.

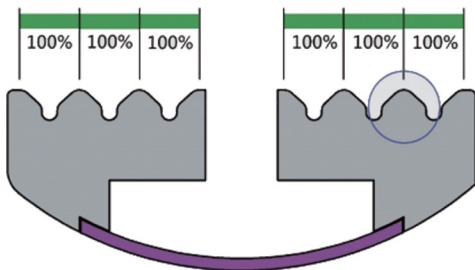
100% of the receiving area for staple leg guiding, which can provide **a perfect B - shaped formation.**



ITASB Technology



No - ITASB Technology

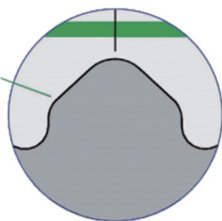


Fully effective staple - oriented surface to offset the deviation

Independent testing by SGS in October 2015 between easyEndo™ and two market leading competitors demonstrated the superiority of easyEndo™. Fewer malformed staples across a broader range of tissue thicknesses.

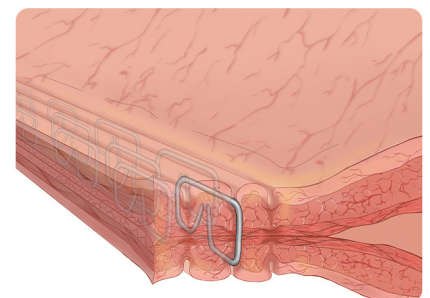
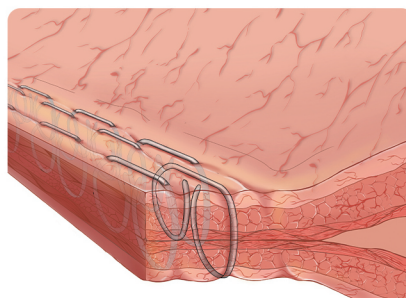
easyEndo™ Anvil

Full staple guiding area



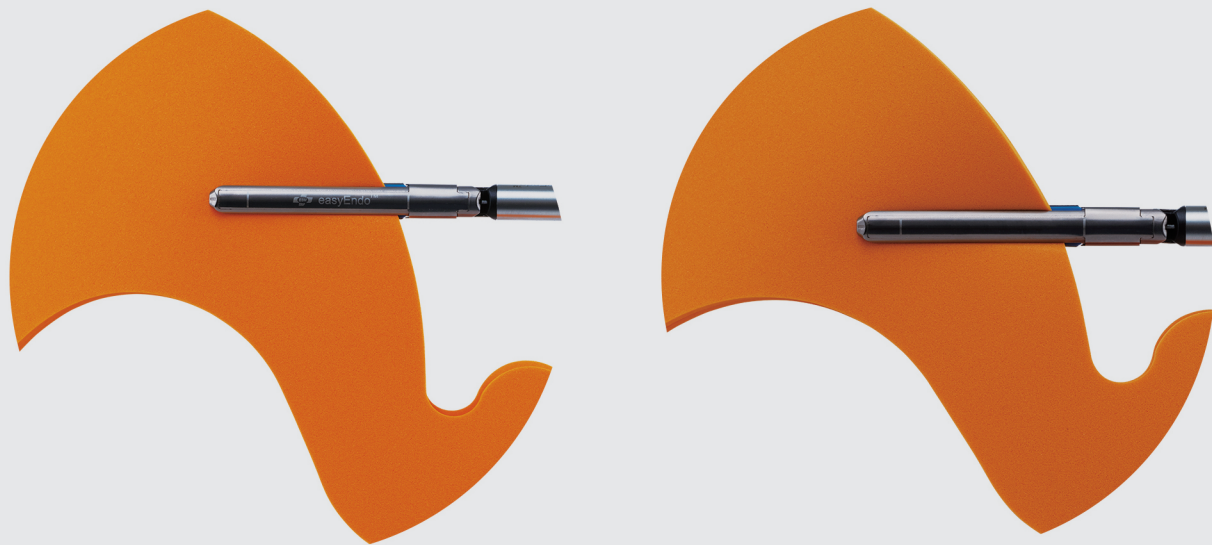
Perfect B - shaped formation to achieve the best suture and hemostasis effect.

This speeds up the healing process by providing better blood perfusion.



One handed Operation

TRUE ONE - HANDED GRASPING MECHANISM



Ideal Clamping Force

Minimal tension on target tissue and less stress on surroundings during positioning and clamping prevent tissue damage caused by excess pressure.

PRODUCT INFORMATION

easyEndo™ Universal Linear Cutting Stapler



Stapler Code	Shaft Length	Shaft OD	Package (BX)
U12S	70mm	12mm	1 pc
U12M	160mm	12mm	1 pc
U12L	250mm	12mm	1 pc

easyEndo™ FLEX Loading Units



Spec. of reload	Length of cutting L2	OD D2	Width of staple W	Height of staple h	color
L30M	30±2	12.5±0.5	2.8±0.3	2±0.2	grey
L30MG	30±2	12.5±0.5	2.8±0.3	2±0.2	grey
L30W	30±2	12.5±0.5	3.0±0.3	2.5±0.2	white
L30WG	30±2	12.5±0.5	3.0±0.3	2.5±0.2	white
L30B	30±2	12.5±0.5	3.0±0.3	3.5±0.2	blue
L45M	45±2	12.5±0.5	2.8±0.3	2±0.2	grey
L45MG	45±2	12.5±0.5	2.8±0.3	2±0.2	grey
L45W	45±2	12.5±0.5	3.0±0.3	2.5±0.2	white
L45WG	45±2	12.5±0.5	3.0±0.3	2.5±0.2	white
L45B	45±2	12.5±0.5	3.0±0.3	3.5±0.2	blue

Spec. of reload	Length of cutting L2	OD D2	Width of staple W	Height of staple h	color
R30M	30±2	12.5±0.5	2.8±0.3	2±0.2	grey
R30MG	30±2	12.5±0.5	2.8±0.3	2±0.2	grey
R30W	30±2	12.5±0.5	3.0±0.3	2.5±0.2	white
R30WG	30±2	12.5±0.5	3.0±0.3	2.5±0.2	white
R30B	30±2	12.5±0.5	3.0±0.3	3.5±0.2	blue
R45M	45±2	12.5±0.5	2.8±0.3	2±0.2	grey
R45MG	45±2	12.5±0.5	2.8±0.3	2±0.2	grey
R45W	45±2	12.5±0.5	3.0±0.3	2.5±0.2	white
R45WG	45±2	12.5±0.5	3.0±0.3	2.5±0.2	white
R45B	45±2	12.5±0.5	3.0±0.3	3.5±0.2	blue
R45C	45±2	12.5±0.5	3.0±0.3	3.8±0.2	gold
R45G	45±2	12.5±0.5	3.0±0.3	4.1±0.2	green
R45T	45±2	15.5±0.5	3.0±0.3	4.8±0.2	black
R60M	60±2	12.5±0.5	2.8±0.3	2±0.2	grey
R60MG	60±2	12.5±0.5	2.8±0.3	2±0.2	grey
R60W	60±2	12.5±0.5	3.0±0.3	2.5±0.2	white
R60WG	60±2	12.5±0.5	3.0±0.3	2.5±0.2	white
R60B	60±2	12.5±0.5	3.0±0.3	3.5±0.2	blue
R60C	60±2	12.5±0.5	3.0±0.3	3.8±0.2	gold
R60G	60±2	12.5±0.5	3.0±0.3	4.1±0.2	green
R60T	60±2	15.5±0.5	3.0±0.3	4.8±0.2	black

EZISURG MEDICAL CO., LTD.

Add: bldg. 1 - A, 199 Tianxiong Rd., Pudong New District, Shanghai 201318, China

Tel: +86-21-5045 6176 Fax: +86-21-5067 6156

Email: contact@ezisurg.com

www.ezisurg.com